

# COMUNE DI OZIERI

Provincia di Sassari



PROGETTO ESECUTIVO

PIANO DI LOTTIZZAZIONE DI UN COMPARTO DELLA ZONA (C 11)  
A MONTE DI VIA UGO LA MALFA - "REGIONE SAN GAVINO"

**Il Committente**  
A.P.S. COSTRUZIONI s.r.l.

**Progettisti**  
Ing. Paola Mazza

**Collaboratori**  
Geom. Andrea Ortu

ELABORATO

SCALA :

1:200

TIPOLOGIA EDILIZIA

**Tav.  
19**

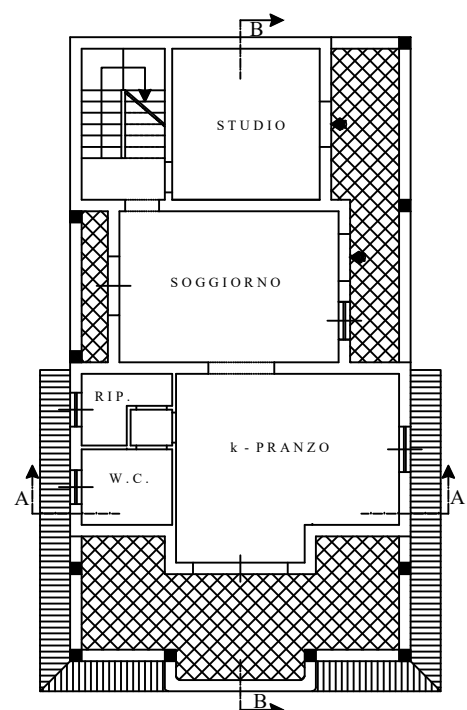
DATA

Maggio 2024

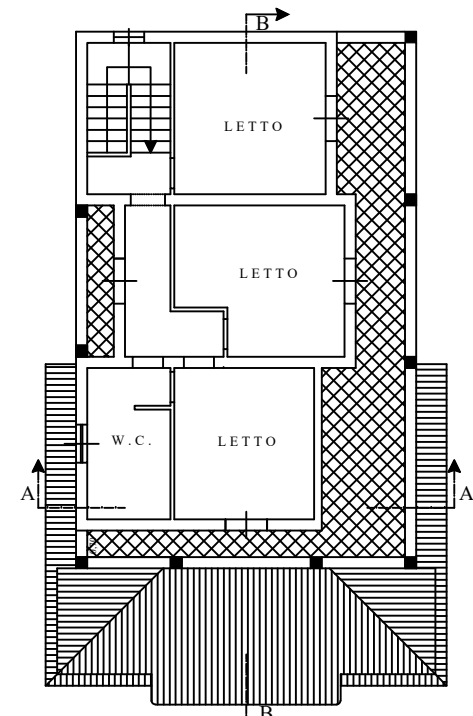
REVISIONE

DESCRIZIONE

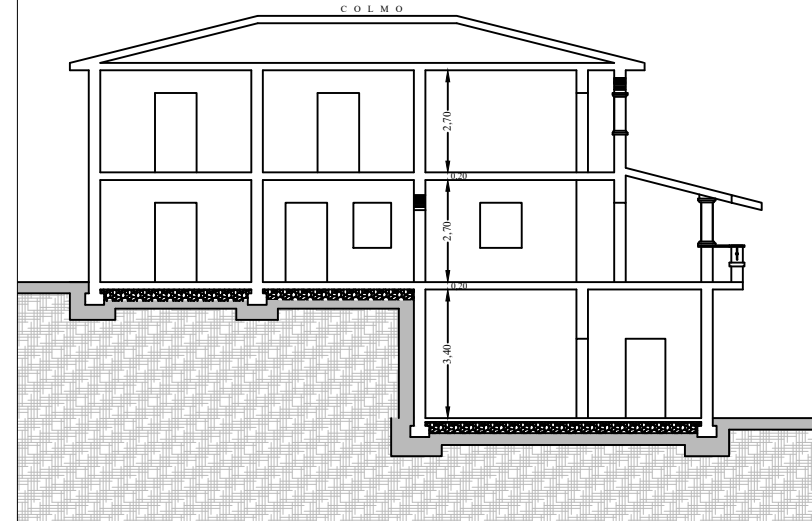
PIANTA PIANO TERRA



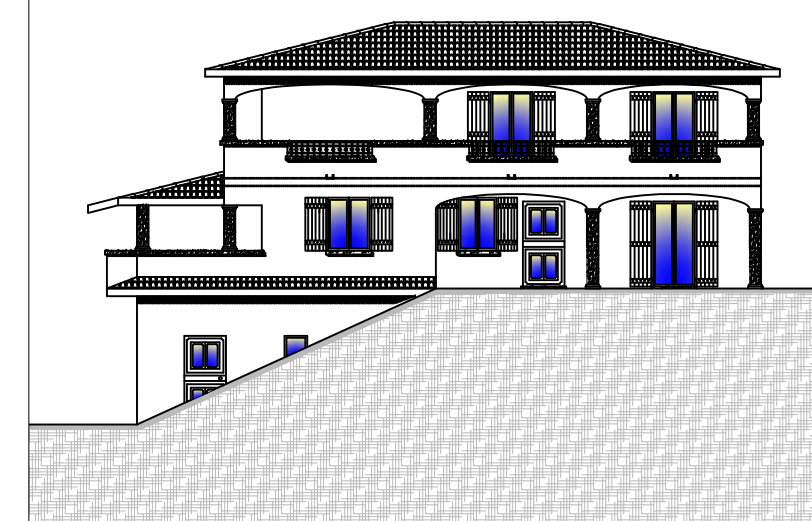
PIANTA PIANO PRIMO



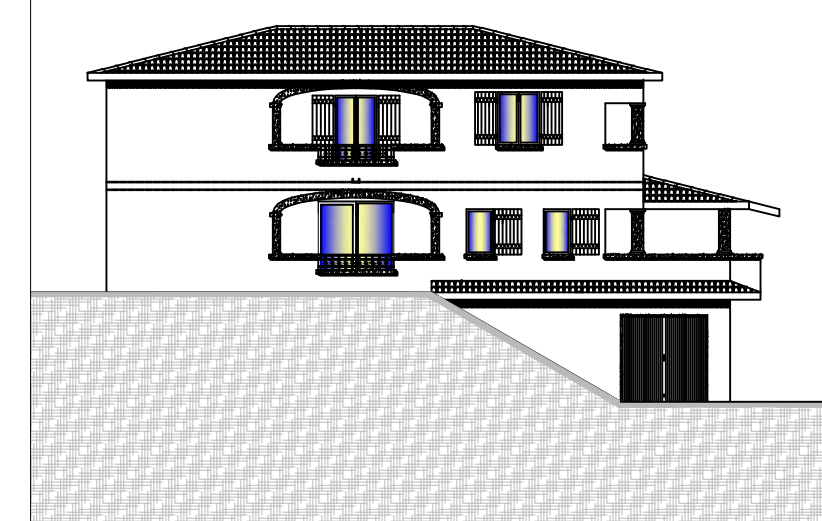
SEZIONE B-B



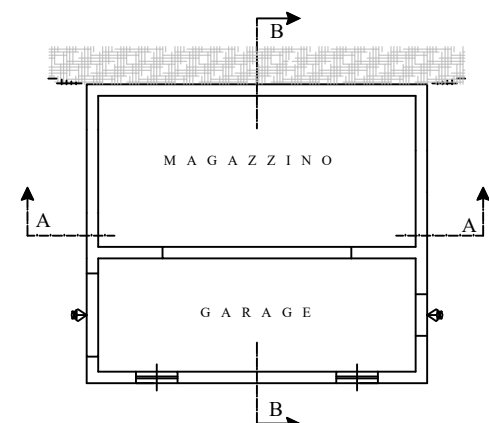
PROSPETTO LATERALE



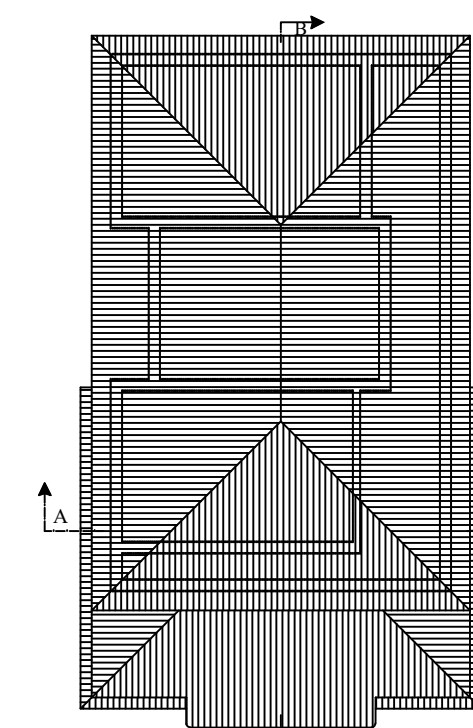
PROSPETTO LATERALE



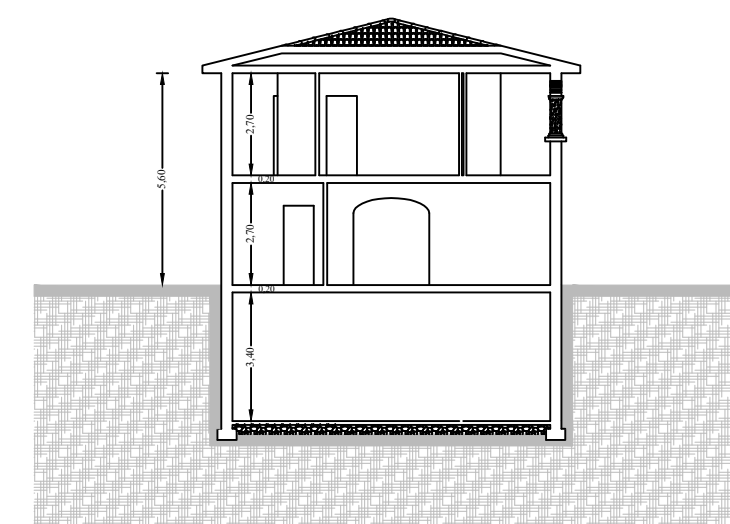
PIANTA PIANO SEMINTERRATO



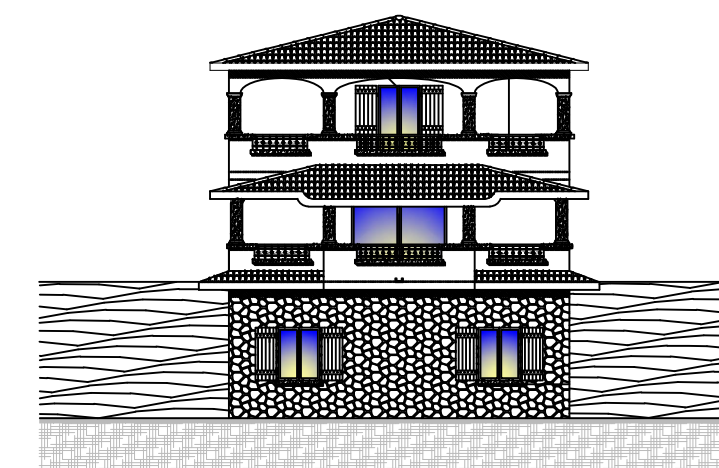
PIANTA COPERTURA



SEZIONE A-A



PROSPETTO PRINCIPALE



RETROSPETTO

